

## Rocla® Sewer Access System

The Rocla® Sewer Access System allows fast construction of high quality, watertight maintenance holes to a depth of 10 metres. The standard, modular components fit together easily to create a complete system.

Rocla® Sewer Access Systems are manufactured from high strength, high density and low absorption concrete. This factory-made product is considerably superior to concrete formed on site.

The Rocla Quality System ensures that a reliable product conforming to AS4198 will be delivered to site.

### PRECAST BASE

Precast bases are available with pre-benched channels to suit the inlet and outlet configuration. Pre-benched bases are custom manufactured for each maintenance hole. The precast base is also available as a shell to suit on-site channel benching. The precast base has an effective depth of 535mm to invert level.



### ROCLA® SEWER ACCESS SYSTEM



Assembled access system

### REDUCER OPTIONS



Conversion slab, spacers and cast iron cover in concrete surround.



Straight back taper, spacers and cast iron cover in concrete surround.



Shaft section with squat cone, tapered spacers and cast iron cover in a concrete surround.

### PRECAST BASE

Product Code	Component	Nominal Height (mm)
XB1015600	SHELL (NO BENCHING)	530
XB1015600B1	150MM OUTLET PIPE	530
XB1015600B2	225MM OUTLET PIPE	530
XB1015600B3	300MM OUTLET PIPE	530



Bases available with pre-benched channels

## Rocla® Shafts

The shaft is the main trunk of the maintenance hole and provides ample space for inspection and maintenance of the structure. Standard heights reduce the number of variables on site. The shafts are available with or without step irons.



### STEP IRONS

Step irons are plastic encapsulated steel, 37.5mm wide. Where step irons are used, ensure correct step alignment.

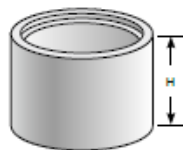
### HANDLING GUIDELINES

Maintenance hole components are provided with cast-in lifting attachments. The pit must be lifted using proprietary lifting attachments, available from specialist lifting equipment suppliers. Lifting should be undertaken strictly in accordance with the equipment supplier's instructions.

Contact Rocla for further information.

### ROCLA® SEWER ACCESS SHAFT

Product Code		Nominal Diameter (mm)	Nominal Height H(mm)
No Steps	With Steps		
X1015300	X1015300S	1050	300
X1015600	X1015600S	1050	600
X1015900	X1015900S	1050	900
X10151200	X10151200S	1050	1200
X10151500	X10151500S	1050	1500
X10151800	X10151800S	1050	1800
X10152100	X10152100S	1050	2100
X10152400	X10152400S	1050	2400
X1180300	X1180300S	1200	300
X1180600	X1180600S	1200	600
X1180900	X1180900S	1200	900
X11801200	X11801200S	1200	1200
X11802400	X11802400S	1200	2400
X1513300	X1513300S	1500	300
X1513600	X1513600S	1500	600
X1513900	X1513900S	1500	900
X15131200	X15131200S	1500	1200
X15132400	X15132400S	1500	2400



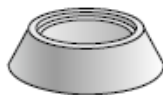
## Rocla Squat Cone

### SQUAT CONE (FOR 1050MM DIA ONLY)

The squat cone is a concentric tapered cone that provides access to shallow maintenance holes where step irons or ladders are not required.

### SQUAT CONE

Product	Nominal Diameter (mm)	Nominal Height (mm)
XSC105	1050	300



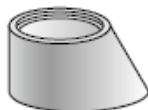
### STRAIGHT BACK TAPER

The straight back taper is suitable for both shallow and deep maintenance hole structures. It has one vertical side suitable for step irons or ladders.

### STRAIGHT BACK TAPER (FOR 1050 DIA ONLY)

Product Code		Nominal Diameter (mm)	Nominal Height (mm)
No Steps	With Steps		
XSB105	XSB105S	1050	600
XSB180	XSB180S	1200	600

Available with or without step irons or inserts for ladders.



### CONVERSION SLAB

The conversion slab may be used in place of the squat cone or straight back taper to provide additional headroom.

The hole is offset to facilitate access.

### CONVERSION SLAB

Product Code	Nominal Diameter (mm)	Nominal Height (mm)
XCS105	1050	150
XCS180	1200	150
XCS1500600H	1500	150

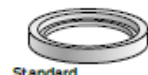


### SPACER RINGS

One or more spacer rings may be used to bring the cover and surround to the required level. Tapered spacer rings provide a grade for the surround and cover.

### SPACER RINGS

Product Code	Component	Nominal Height (mm)
XSR105075	Standard	75
XSR105100	Standard	100
XSR105150	Standard	150
XSR105200	Standard	200
XSR105TAP	Tapered	75-125



Standard



Tapered

## Cover and Surrounds

Covers and surrounds sit flush with the surface level. Available as reinforced concrete, ductile iron cover and frame, ductile iron cast into a concrete surround, or other variations. Covers and surrounds are available for Class B or D load applications in accordance with AS 3996 or local authority requirements.

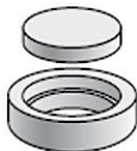
### DUCTILE IRON COVERS

Product Code	Load Application	Nominal Height (mm)
<b>Solid top DI cover and frame with concrete surround</b>		
XG1019LW	Class B	100
XG1019HW	Class D	150
<b>Concrete infill cover and frame with concrete surround</b>		
XG1015R	Class B	100
XG1015FH	Class D	150



### CONCRETE COVER AND SURROUND

Product Code	Load Application	Nominal Height (mm)
<b>Albury-Wodonga Type</b>		
XS1065L	Class B Cover	—
XS1066L	Class B Surround	150



### JOINT SEALANT & PRIMER

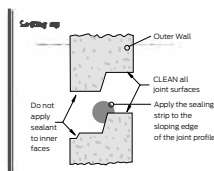
Rocla® Sewer Access System Sealing Compound is used to seal all joints. Installation instructions are clearly marked on each package. Sealer is supplied in pre-cut lengths.

### JOINTING PROCEDURE

Refer to brochure or back of sealing compound package for correct jointing procedure.

### JOINTING PRODUCTS

Product Code	Product	Length/Quality
XSL600	Sealer - Small	2.4m roll
XSL1015	Sealer - Large	3.6m roll
XSL1180	Sealer - Extra Large	4.2m roll
XSL1500	Sealer - Extra Extra Large	5.1m roll
XPMR	Primer	1 litre tin



**Sewer Access System**
**Rocla® Sewer Access System – Component Selection Guide**

Depth to Invert (metres)	Cover & Surround 100mm	75mm Spacer Ring	100mm Spacer Ring	150mm Spacer Ring	200mm Spacer Ring	Squat Cone	Straight Back Taper	Precast Base Depth to Invert 520mm	300mm Chamber	600mm Chamber	900mm Chamber	1200mm Chamber	1500mm Chamber	1800mm Chamber	2100mm Chamber	2400mm Chamber	Mastic Small 24m Roll	Mastic Large 36m Roll
0.920	1					1		1									1	1
0.995	1	1				1		1									2	1
1.020	1		1			1		1									2	1
1.070	1			1		1		1									2	1
1.095	1	1	1			1		1									3	1
1.120	1	1				1		1									2	1
1.220	1						1	1									1	1
1.295	1	1					1	1									2	1
1.320	1		1				1	1									2	1
1.370	1			1			1	1									2	1
1.395	1	1	1				1	1									3	1
1.420	1				1		1	1									2	1
1.520	1						1	1	1								1	2
1.595	1	1					1	1	1								2	2
1.620	1		1				1	1	1								2	2
1.670	1			1			1	1	1								2	2
1.695	1	1	1				1	1	1								3	2
1.720	1				1		1	1	1								2	2
1.820	1						1	1		1							1	2
1.895	1	1					1	1		1							2	2
1.920	1		1				1	1		1							2	2
1.970	1			1			1	1		1							2	2
1.995	1	1	1				1	1		1							3	2
2.020	1				1		1	1		1							2	2
2.120	1						1	1			1						1	2
2.195	1	1					1	1			1						2	2
2.220	1		1				1	1		1							2	2
2.270	1			1			1	1			1						2	2
2.295	1	1	1				1	1			1						3	2
2.320	1				1		1	1			1						2	2
2.420	1						1	1				1					1	2
2.495	1	1					1	1				1					2	2
2.520	1		1				1	1				1					2	2
2.570	1			1			1	1				1					2	2
2.595	1	1	1				1	1				1					3	2
2.620	1				1		1	1				1					2	2
2.720	1						1	1					1				1	2
2.795	1	1					1	1					1				2	2
2.820	1		1				1	1					1				2	2
2.870	1			1			1	1					1				2	2
2.895	1	1	1				1	1					1				2	2
2.920	1				1		1	1					1				2	2
3.020	1						1	1						1			1	2
3.095	1	1					1	1						1			2	2
3.120	1		1				1	1						1			2	2

**Sewer Access System**
**Rocla® Sewer Access System – Component Selection Guide**

Depth to Invert (metres)	Cover & Surround 100mm	75mm Spacer Ring	100mm Spacer Ring	150mm Spacer Ring	200mm Spacer Ring	Squat Cone	Straight Back Taper	Precast Base Depth to Invert 520mm	300mm Chamber	600mm Chamber	900mm Chamber	1200mm Chamber	1500mm Chamber	1800mm Chamber	2100mm Chamber	2400mm Chamber	Mastic Small 24m Roll	Mastic Large 3.6m Roll
3.170	1			1			1	1						1			2	2
3.195	1	1	1				1	1						1			3	2
3.220	1				1		1	1						1			2	2
3.320	1						1	1							1		1	2
3.395	1	1					1	1							1		2	2
3.420	1		1				1	1							1		2	2
3.470	1			1			1	1							1		2	2
3.495	1	1	1				1	1							1		3	2
3.520	1				1		1	1							1		2	2
3.620	1						1	1								1	1	2
3.695	1	1					1	1								1	2	2
3.720	1		1				1	1								1	2	2
3.770	1			1			1	1								1	2	2
3.795	1	1	1				1	1								1	3	2
3.820	1				1		1	1								1	2	2
3.920	1						1	1	1							1	1	3
3.995	1	1					1	1	1							1	2	3
4.020	1		1				1	1	1							1	2	3
4.070	1			1			1	1	1							1	2	3
4.095	1	1	1				1	1	1							1	3	3
4.120	1				1		1	1	1							1	2	3
4.220	1						1	1		1						1	1	3
4.295	1	1					1	1		1						1	2	3
4.320	1		1				1	1		1						1	2	3
4.370	1			1			1	1		1						1	2	3
4.395	1	1	1				1	1		1						1	3	3
4.420	1				1		1	1		1						1	2	3
4.520	1						1	1			1					1	1	3
4.595	1	1					1	1			1					1	2	3
4.620	1		1				1	1			1					1	2	3
4.670	1			1			1	1			1					1	2	3
4.695	1	1	1				1	1			1					1	3	3
4.720	1				1		1	1			1					1	2	3
4.820	1						1	1				1				1	1	3
4.895	1	1					1	1				1				1	2	3
4.920	1		1				1	1				1				1	2	3
4.970	1			1			1	1				1				1	2	3
4.995	1	1	1				1	1				1				1	3	3
5.020	1			1			1	1				1				1	2	3
5.120	1						1	1					1			1	1	3
5.195	1	1					1	1					1			1	2	3
5.220	1		1				1	1					1			1	2	3
5.270	1			1			1	1					1			1	2	3
5.295	1	1	1				1	1					1			1	3	3
5.320	1				1		1	1					1			1	2	3