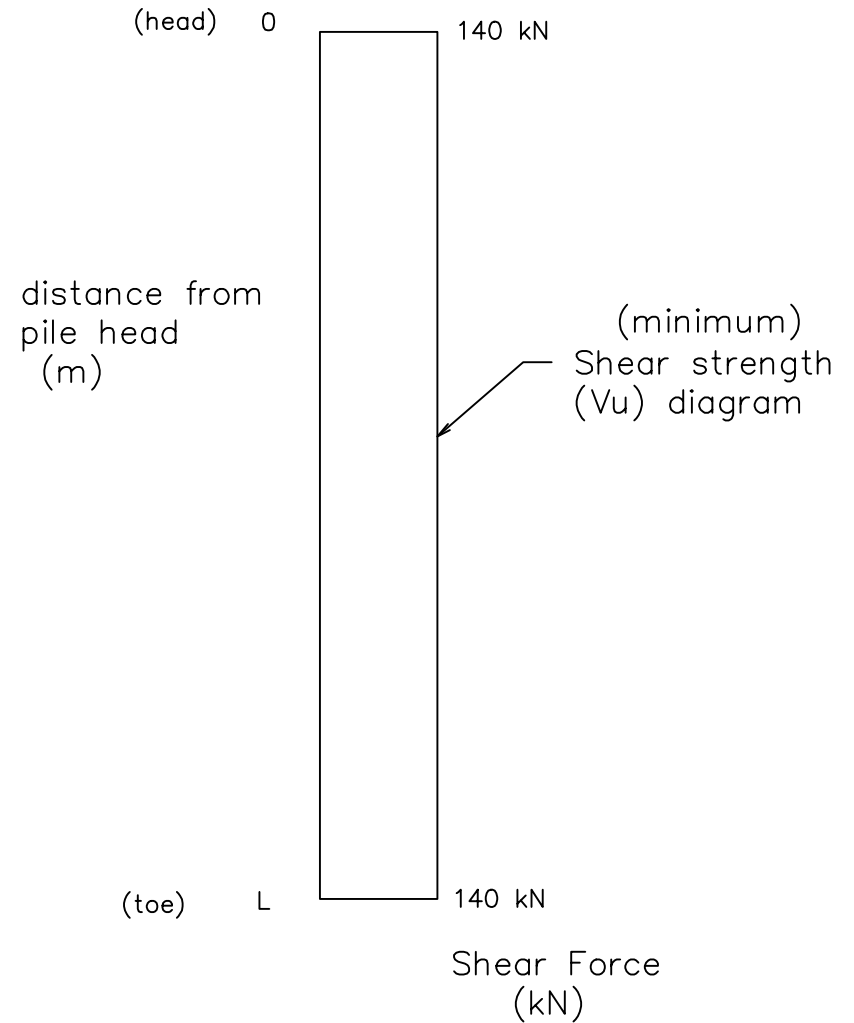
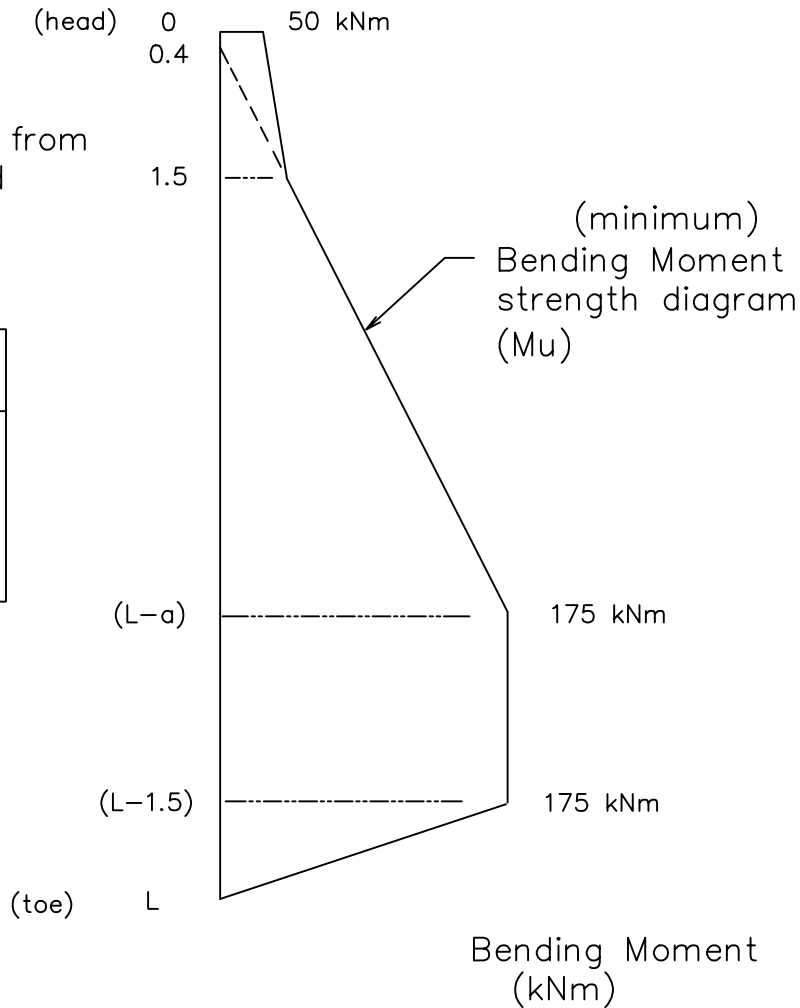


| pile length 'L' range (m) | dimension 'a' (m) |
|---------------------------|-------------------|
| 8 to 9.5 | 5.0 |
| 10 to 12.5 | 5.5 |
| 13 to 15.5 | 6.0 |

nb dimension 'a' are assumed values.



Notes :

1. The bending and shear strength values shown above apply to standard Rocla 400 dia 175 kNm RPC Marina piles.
2. The minimum embedment depth for these piles should be based on satisfying both fixity and shear strength (dependant upon soil properties).
3. The strengths shown are based on proven Rocla design methods and are proven by load tests.

All dimensions in mm unless otherwise stated.

filename : 90339A.dwg

| | | | | |
|---|---|----------------|-------------|-----------|
| <p>COMMERCIAL-IN CONFIDENCE</p> <p>THE INFORMATION CONTAINED HEREIN IS CONFIDENTIAL TO AMATEK LIMITED, A.C.N. 000 032 191 ('AMATEK') AND AMATEK IS THE PROPRIETOR OF THE COPYRIGHT IN THE DRAWING(S). THE INFORMATION AND DRAWING(S) ARE NOT GENERALLY AVAILABLE. AS UNAUTHORISED DISCLOSURE, REPRODUCTION OR USE OF THE INFORMATION AND DRAWING(S) MAY CAUSE AMATEK IRREPARABLE HARM, AMATEK WILL TAKE ALL STEPS NECESSARY TO PREVENT AND/OR PROSECUTE ANY UNAUTHORISED DISCLOSURE, REPRODUCTION OR USE OF THE INFORMATION AND DRAWING(S).</p> | | | ISSUE NOTES | |
| | | | SCALE | REFERENCE |
| | <p>BM + SF strength diagrams for 400 dia 175 kNm std Marina RPC designs</p> | | CHECKED | DATE |
| | DES. ENG. | DATE | DRAWN | DATE |
| | CODE | DRAWING NUMBER | ISSUE | |
| 34P | 90339 | A | | |