

## RKO® Stormwater Pits

### RKO® Pits – Handling & Installation

These procedures are a guide only. It is the responsibility of the installer to comply with the specifier and the supervising authority. Call Rocla for more detailed installation advice.

#### Handling Guidelines

- RKO® base units should be installed into position prior to commencing the knock-out procedure.
- RKO® components incorporate SwiftLift anchors. Approved lifting hooks and equipment must be used at all times. Lifting should be undertaken strictly in accordance with the equipment supplier's instructions.
- RKO® pit components should not be travelled over rough terrain, to limit dynamic loading.

#### Site Stacking

The safe maximum height for stacked components is determined by site conditions.

#### Site Preparation

The base unit must be supported on a stable and well-compacted foundation. Any unsuitable material should be replaced with graded aggregate. Obtain geotechnical advice if unsure.

#### Safety

Safety helmets and safety boots should be worn at all times when handling and installing precast sections. Safety glasses should be worn when punching out the holes.

### RKO® Pits: Key Installation Points

Preformed knockout sections in the base unit make it easy to punch out pipe entry and exit holes.

- All work should be performed from the outside of the pit.
- Ensure you are wearing the appropriate PPE for this procedure.
- Use a 900gm (head weight) ball hammer and knock a hole in the centre of the smallest recess nearest the bottom of the pit.
- For larger pits with a single recess, select a 1.8kg sledgehammer and knock a hole in the centre of the recess.

- Do not use excessive force with the knock-out procedure, as this may cause cracking of the pit walls.

- Work your way out to the larger recesses in concentric circles

- Once the initial recess is complete, move on to the larger recesses until the required diameter is achieved.

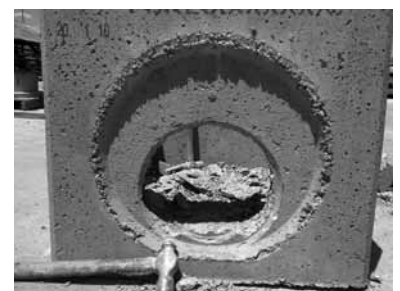
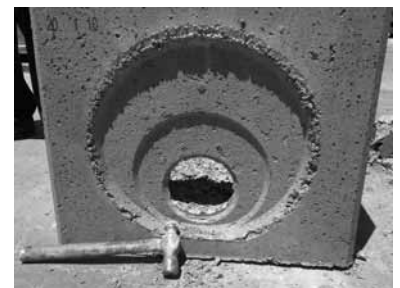
- Knock the smallest possible hole (recommended pipe OD plus 20mm).

- Place pipe into the penetration. The pipe should be level with the inside of the pit wall

Ensure adequate sealing compound is used around the pipes, "Bandage Pipe Seal", refer to the pipe backfill specification for adequate compaction around the pipes.

- With the RKO® risers, ensure that backfill is placed to the full height and properly compacted around the corner sections, refer to the backfill specification drawings.

- Place lid and riser sections on the pit structure then backfill to finished surface level.



### Joints Between Units

The joints require no sealer. Male and female rebates are cast into the system components. Ensure joint surfaces are undamaged and free of mud, sand, concrete and other foreign matter.

### Backfilling

Place fill material carefully around the assembled system, ensuring the base and shaft are not dislodged. Continue backfilling and compacting using even layers of fill material. When precast pits are installed in pavements or roads, instructions from the road or supervising authority must be strictly followed.