

The drying and wetting effects on clogging and pollutant removal through porous pavements

Les effets du séchage et du mouillage sur l'élimination de polluants et sur l'obstruction de surfaces poreuses

C. F. Yong*, A. Deletic*, T. D. Fletcher*, M. R. Grace**

*Institute for Sustainable Water Resources, Department of Civil Engineering,

**Water Studies Centre, School of Chemistry,

Monash University, Victoria, Australia, 3800

fern.yong@eng.monash.edu.au

RÉSUMÉ

Ce document présente les principaux résultats de recherche obtenu par notre laboratoire sur les effets des périodes de temps sec et pluvieux quant à l'élimination et l'obstruction de polluants par trois types de surface poreuse. Ces surfaces sont l'asphalte poreux monolithique (PA), le Permapave (pp), et le Hydrapave modulaire (HP). Les surfaces ont été aléatoirement dosées avec quatre flux différents pendant 13 jours, ce qui est équivalent à la moyenne pluviométrique annuelle de Brisbane, Australie (1200 mm); 3 heures de séchage ont été simulées entre chaque flux. Des échantillons collectés à l'entrée et en sortie ont été rassemblés et les solides en suspension totaux (TSS), le phosphore total (TP) et l'azote total (TN) ont été analysés. Un orage ne se produisant qu'une année sur 5 à Brisbane a été simulé en 6^{èmes}, 8^{èmes}, 12^{èmes} et 16^{èmes} semaines pour évaluer le taux d'obstruction. Pour les conditions standards de dosage, aucune des surfaces n'a montré de signes d'obstruction même après 15 ans. Cependant, pour les conditions d'inondation, l'accumulation commence après 12 ans sur les PA et HP, alors que Permapave n'a toujours pas montré de signe d'obstruction après 18 ans. Les effets du séchage et des divers flux n'étaient pas encore montrés dans les TSS, tous les systèmes réalisant une élimination approximativement de 100 %. L'élimination moyenne de TP était de 20 % pour tous les flux excepté pour un débit faible, ce qui démontre une lixiviation importante avec le temps. On a également observé la lixiviation dans le TN pendant tous les flux excepté des flux élevés. Les résultats de TSS, de TP et de TN observés pendant les événements d'orage étaient semblables à celui des flux élevés.

ABSTRACT

This paper presents the key findings of a laboratory investigation into the effects of dry and wet weather periods on the clogging behaviour and pollutant removal efficiency of three porous pavement types over their lifespan. These pavements were monolithic Porous Asphalt (PA), Permapave (PP), and modular Hydrapave (HP). The pavements were randomly dosed with four different flows over a period of 13 days, which is equivalent to the average annual rainfall of Brisbane, Australia (1200 mm). A drying event of 3 hours duration was simulated between every flow. Inflow and outflow samples were collected and analysed for Total Suspended Solids (TSS), Total Phosphorus (TP) and Total Nitrogen (TN). To evaluate the rate of clogging, a 1 in 5 year Brisbane storm event was simulated in the 6th, 8th, 12th and 16th week. Under normal dosing conditions, none of the pavements showed signs of clogging even after 15 years. However, under storm conditions, both PA and HP started to pond after 12 years, while Permapave showed no signs of clogging after 18 years. The drying and various flow events showed no effects in TSS removal, with all systems achieving a removal of approximately 100 %. The average TP removal was 20 % for all flows except for low flow, which had a significant amount of leaching over time. Leaching was also observed in TN during all flows except high flows. The TSS, TP and TN results observed during storm events were similar to that of high flow.

KEYWORDS

Clogging, drying and wetting, pollutant removal, porous pavements, variable flow rates

1 INTRODUCTION

Stormwater runoff, a waste product of urban activity that has long been undervalued and unappreciated, is increasingly being recognised as a valuable commodity that should not be discharged unscrupulously. The rising rate of population growth and urbanization, which contributes to increased imperviousness, higher runoff volume and decreased water quality, has further exacerbated this problem. Water sensitive urban design (WSUD) is a stormwater management approach that emphasizes on sustainable practices and minimises the effect of urbanization. Most of the available stormwater management measures are difficult to implement on a wide scale due to existing infrastructure and space/cost constraints. Porous pavements however, is one such measure that is easily retrofitted within developed urban areas.

Porous pavements are a permeable pavement surface with an underlying stone reservoir that temporarily stores surface runoff before infiltrating into the subsoil (Ferguson, 2005). This porous surface replaces traditional pavement, allowing runoff to infiltrate directly into the soil to receive water quality treatment. They come in several forms and are either monolithic or modular. Monolithic structures consist of bound granular material without the finer aggregate grain sizes and are incorporated with void spaces to allow for infiltration; while modular structures are constructed from individual pavers, with gaps between each paver. They are usually laid on sand or fine gravel underlain by a layer of geotextile, with a layer of coarse aggregate below.

Porous pavements can be used to reduce peak stormwater runoff, increase groundwater recharge, as well as improve stormwater quality. Gburek and Urban (1980) found that as much as 70 % to 80 % of annual rainfall goes towards groundwater recharge. The efficiency of porous pavement in attenuating peak discharges has also been confirmed in several studies (Pratt *et al.*, 1999; Bean *et al.*, 2007). In fact, the ability of porous pavements to reduce peak flood discharges and reduce runoff volume by infiltration to the underlying soil are the major reasons for their adoption in many countries (Scholz and Grabowiecki, 2007).

While porous pavements have the potential to be a highly effective treatment practice, history has unfortunately shown many failures due to poor design, construction and maintenance practices. Traditionally, porous pavement sites have had a high failure rate of approximately 75 % (Galli, 1992) due to clogging. This process decreases the porosity, permeability and hence the infiltration rate of a system. Clogging can occur during or immediately after construction, or through long-term use. The performance of porous pavement, which varies depending on the local climatic, soil and plant conditions have also had a poor reputation of having insufficient infiltration capacity. Several studies have shown that with proper maintenance, porous pavement can retain its permeability (Goforth *et al.*, 1983; Gburek and Urban, 1980). Although a lot is known about the pollutant removal performance of porous pavement (Booth and Leavitt, 1999), particularly when the system is 'new', very few studies have been published, which address clogging and its impacts on hydraulic behaviour, and how these phenomena respond to the effects of ageing. The key mechanisms that govern clogging in different systems are also poorly understood.

As such, an experiment designed to test the effectiveness of various types of porous pavements in reducing stormwater volume and improving outflow stormwater quality was conducted. Three types of porous pavement material will be compared to deliver new insights into the nature of porous pavement clogging and consequently the treatment performance of these systems under Australian conditions. This will be achieved by investigating the rate of clogging and the treatment efficiency of key stormwater pollutants. Recommendations regarding the porous pavements design will also be developed. This paper reports on the second phase of a laboratory investigation into processes that occur within typical porous pavement systems (the case when pavements are used for attenuation of flow with no ex-filtration allowed).

2 METHODS

Three porous pavement systems that best represent the available range were chosen for this study (Figure 1). They are the traditional monolithic porous asphalt (PA), popular modular Hydrapave (HP) (known as Formpave in the UK), and Permapave (PP), a new type of monolithic pavement developed in Australia. PA consists of a standard bituminous asphalt surface, in which all the fines have been removed, a filter layer of crushed aggregate and a reservoir layer (Diniz, 1980). HP is an 80 mm thick concrete paver with a unique chamber and bevel system, which is laid on a 50 mm course of 5 mm stone (Boral Clay and Concrete, 2005). The laying course is further separated from the upper and lower sub-base by a layer of geotextile. PP is made from crushed gravel of 50 mm thickness and is placed over a layer of 5-20 mm screen crushed rock (Dymon Industries, 2007).

The laboratory study was conducted in a compressed time scale, the wetting and drying period of which has been exaggerated in order to study the clogging processes. A similar laboratory study was conducted in 2008 but only the wetting events were simulated. The pavements were investigated for their rate of clogging as well as their treatment efficiency of key stormwater pollutants.

Laboratory Rig

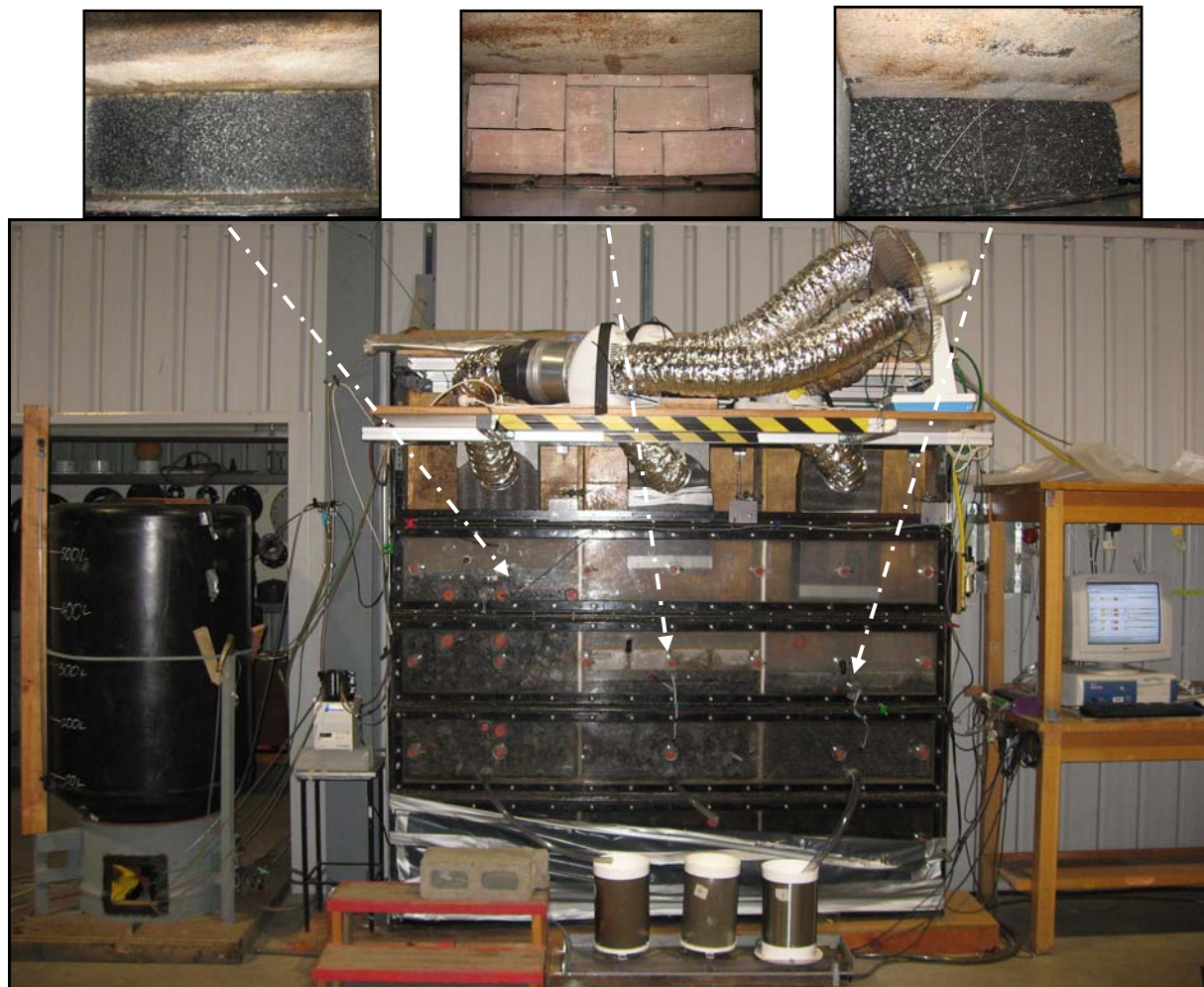


Figure 1. The experimental rig for the comparison of PA, HP and PP.

The pavements were installed side by side in a 2.7 m x 0.45 m x 1.95 m rig, which was divided into three separate vertical compartments (Figure 1). HP and PP were installed according to the specifications supplied by their manufacturers, while PA was installed following the standard guidelines ((Boral Clay and Concrete, 2005; Dymon Industries, 2007). The gravel, used as the sub-

base for each system, was thoroughly washed prior to the filling of the rig to ensure that they were free of fines. Each sub-base layer was compacted with a hand tamper before the pavement was placed firmly over the sub-base. As the basis of operation for HP is the infiltration of water through the small channels formed at the end of the pavers, careful measurements were taken to maintain the ratio of channel to paver area (typical of normal installation) and the exact number of pavers and channels in the rig.

The stormwater distribution system consists of a 550 L tank, a peristaltic pump, connection tubes and a specially designed pneumatic water delivery mechanism that uniformly distributes stormwater over each surface. This distribution system was continually refined until a uniform inflow of water was achieved over each of the porous pavement systems.

The heat distribution system was initially trialled and tested with a range of radiant lamps and fan heaters at various settings. Heat sensors were installed on the surface as well as below each pavement to determine the best heat source that achieved a minimum 80 % moisture loss from the pavements within a 3 hour period. Fan heaters were found to perform best. The final heating system consists of a desk fan, three individual fan heaters, metal heat ducts and their corresponding rectangular insulator heat delivery boxes to convey heat at a specific setting towards the surface of each system (Figure 1). The desk fan, which was connected to the individual heaters via heat ducts, ensured a steady flow of cool air being drawn into the system to prevent the heaters from overheating, while the insulator boxes, which were of different heights, were designed such that when placed above the pavements, they were at equal distances of 30 cm from the surface of each pavement.

Experimental Procedure

Prior to the commencement of this experiment, a series of hydraulic conductivity tests were performed to determine the porosity of each individual pavement system when “new”, using clean tap water. Standard Darcy’s tests (water was fed from bottom-up) were carried out.

The inflow rates used in the experiment were reflective of sub-tropical Brisbane climate. Using the Model for Urban Stormwater Improvement Conceptualization (MUSIC) (CRCCH, 2005), the frequency curve of a typical 10 year “effective” rainfall event for Brisbane, Australia was generated. From the frequency curve, 4 flow rates, each corresponding to a different percentile group of rainfall intensity, as shown in Table 1, were chosen. Flow A was the lowest flow, followed by Flow B, C and D in increasing order. Each flow rate represented the average rainfall intensity of the 0-39, 40-59, 60-79 and 80-100 percentile groups. By multiplying the fraction represented by each of these percentile groups with their corresponding average intensities, an overall volume was obtained. A subsequent division of this overall volume with the average annual Brisbane rainfall of 1200 mm determined the duration needed to simulate 1 years worth of rain. A total of 10 days was calculated to deliver 1200 mm of rain at 4 different flow rates at their corresponding percentile fractions.

Table 1. Selection of flow rates from 10 year Brisbane Rainfall Time Series (1988 to 1997)

Flow	Frequency	Flow rate per ha.	Velocity		Pavement Area m ²	Flow rate	
		m ³ /sec	m/sec	mm/hr		m ³ /sec	ml/sec
A	0-39	0.0006	5.8E-08	0.2	0.1564	9.0E-09	0.009
B	40-59	0.0029	2.9E-07	1.0	0.1564	4.5E-08	0.045
C	60-79	0.0071	7.1E-07	2.6	0.1564	1.1E-07	0.111
D	80-100	0.0609	6.1E-06	21.9	0.1564	9.5E-07	0.953

To determine the heating conditions, multiple batches of each pavement were tested for moisture loss. They were first soaked in water before being placed under atmospheric conditions. An average of 4 days was determined to be required for a minimum moisture loss of 80 %. The same amount of moisture loss was achieved by using the fan heaters for 3 hours. Using this information and historical Brisbane rainfall data, an annual average of 21 dry events (≥ 4 days) was determined. Each dry event was simulated with 3 hours of drying using the fan heaters, thus giving a total of 2.7 days. Hence, 1200 mm of rain and 21 dry events was simulated in 13 days. This was achieved by randomly simulating the four different flows and incorporating a drying event of 3 hours duration between each flow.

Table 2. Typical urban stormwater pollutant concentrations (Duncan, 1999).

Pollutant	Concentration (mg/L)
Total Suspended Solids (TSS)	150
Total Nitrogen (TN)	2.6
Total Phosphorus (TP)	0.35
Copper (Cu)	0.05
Lead (Pb)	0.14
Zinc (Zn)	0.25
Cadmium (Cd)	0.0045

The pavements were subsequently dosed at these flow rates, with a semi-synthetic stormwater mixture. The stormwater was prepared by mixing sediment from a stormwater wetland with tap water in known volume, and topping up with specific concentrations of dissolved pollutants to achieve pollutant concentrations typical of urban land use, as shown in Table 2 (this method has previously been described by Hatt *et al.* (2007)). The pneumatic water delivery system ensured the random and equal distribution of water as well as sediments over the three surfaces, while the heating system ensured a consistent average temperature of 35°C to simulate 18 years of actual Brisbane rain and drought conditions.

Sampling Procedure and Clogging Monitoring

An intensive sampling regime was conducted in which samples were collected from the inflow and outflow, and analysed for Total Suspended Solids (TSS), Total Phosphorus (TP), and Total Nitrogen (TN), in accordance with standard methods for the examination of water and wastewater (APHA-AQQA-WPCF, 2005). Particle size distributions (PSD) were also measured in samples that had sufficient sediment using a Beckham Coulter LS100Q Laser Diffraction Particle Size Analyser. Flow rates were monitored continuously using tipping buckets along with manual measurements.

During each sampling session, samples were taken at both the inflow and outflow. The flow rates and temperature in, and just underneath, each pavement were also monitored continuously as previously described by Siriwardene *et al.* (2007). The collection of every sample was accompanied by pH measurement to enable early predictions to be made about the behaviour of metals in the system. This approach was particularly beneficial as the turnaround time for the laboratory analyses of metals was approximately 3 months.

To study the rate of clogging during typical floods, a 1 in 5 year Brisbane storm (of 5 min. duration – typical design flood for small catchments where porous pavements are likely to be deployed), was simulated in each of the 6th, 8th and 12th and 16th weeks of the experiment. The intensity of these storms was 191 mm/hr. To date, 18 years of operation under Brisbane climate have been simulated.

3 RESULTS AND DISCUSSION

3.1 Clogging

Under normal dosing, none of the pavements showed signs of clogging even after 15 years of operation in Brisbane. However, during the third storm simulation, both PA and HP started to pond 5 mm and 50 mm respectively, after 12 weeks of operation (Table 3). This clogging observation worsened during the fourth storm simulation, with PA overflowing from a height of 35 mm above its surface. Permapave however, has still not showed signs of clogging after 17 weeks, even for a 1 in 100 year event. The clogging phenomena observed in the previous experiment (Yong *et al*, 2008), which only simulated the wetting cycle, occurred much earlier in the operational years of the system, with PA clogging at 8 weeks and HP at 6 weeks. As such, the late occurrence of clogging as observed in this current experiment could be attributed to either the effects of drying or the various flow rates, which seems to slow down the occurrence of clogging, evidenced from the results for all three pavements of both experiments.

Table 3. Depth of Ponding Layer Observed over Time

Duration	Ponding depth indicating clogging (mm)		
	PA (above pavement)	HP (above geotextile)	PP (above pavement)
1 week – average rainfall	0	0	0
5 weeks – average rainfall	0	0	0
6 weeks – Storm 1	0	0	0
7 weeks – average rainfall	0	0	0
8 weeks – Storm 2	0	0	0
10 weeks – average rainfall	0	0	0
12 weeks – Storm 3	5	50	0
15 weeks – average rainfall	0	0	0
16 weeks – Storm 4	35	60	0
18 weeks – average rainfall	35	20	0

Nb: 1 week of inflow corresponds to 1 year of operation in Brisbane.

In most porous pavement designs, the pavement itself acts as pre-treatment to the stone reservoir below. Although studies have shown that porous pavements remain permeable over time (Brattebo *et al*. 2002, Dierkes *et al*, 2002), frequent maintenance is still necessary to prevent clogging. In all three pavements, the surface themselves act as a physical containment (via fixation, stabilization, solidification and encapsulation) to the contaminants and the aggregate, the efficiency of which varies with the overall composition and structure of each pavement material. Although the gravel layer directly below the pavement helps as a second pre-treatment measure, frequent vacuum sweeping is still critical to keep the surface clean and the systems working.

3.2 Water Quality

Table 4. Average TSS, TP and TN Inflow Concentrations and their Removal Percentages over Time

Duration	Flow	TSS				TP				TN			
		Ave. Inflow (mg/L)	Removal %			Ave. Inflow (mg/L)	Removal %			Ave. Inflow (mg/L)	Removal %		
			PA	HP	PP		PA	HP	PP		PA	HP	PP
1 year	A	65	100	98	100	0.37	51	55	63	2.0	-55	-53	-14
5 years	A	48	98	95	95	0.39	32	42	53	2.1	8	-10	-16
7 years	A	38	84	92	96	0.51	16	29	71	3.6	-59	-82	49
10 years	A	51	94	89	86	0.42	-3	32	37	2.3	-32	-96	-56
15 years	A	27	74	88	89	0.27	-6	-11	-18	1.3	-200	-200	-53
1 year	B	93	98	99	53	0.50	57	60	46	2.8	-26	0	38
5 years	B	103	99	100	97	0.51	32	57	58	2.9	-4	3	0
7 years	B	63	99	99	99	0.54	26	43	43	3.0	-25	-83	-83
10 years	B	96	98	99	99	0.41	14	35	41	2.7	17	-3	0
15 years	B	38	96	98	98	0.41	24	40	45	2.4	0	-28	-25
1 year	C	157	99	99	92	0.53	58	65	67	2.8	-7	4	-24
5 years	C	123	99	99	99	0.53	45	56	59	3.1	27	20	28
7 years	C	173	99	99	99	0.53	35	49	46	3.6	11	0	33
10 years	C	89	98	98	100	0.56	33	36	45	3.0	16	27	-7
15 years	C	333	99	99	100	0.52	41	39	45	2.8	11	-4	-10
1 year	D	100	87	91	74	0.49	51	57	38	2.7	19	30	33
5 years	D	150	94	95	97	0.55	41	40	47	2.8	14	4	14
7 years	D	137	93	94	96	0.51	40	42	46	2.7	15	15	25
10 years	D	140	92	94	98	0.56	34	31	38	2.9	21	21	21
15 years	D	203	91	97	97	0.52	35	37	42	3.0	13	16	13
6 years (Storm 1)	Storm	157	73	81	81	0.55	34	33	33	2.7	21	15	23
8 years (Storm 2)	Storm	157	89	92	94	0.52	23	27	23	2.8	14	21	14
12 years (Storm 3)	Storm	150	71	80	81	0.53	25	27	31	2.9	10	10	14
16 years (Storm 4)	Storm	163	76	86	76	0.50	24	27	24	2.8	11	14	18

TSS

The inflow concentration fluctuated between 30 mg/L and 350 mg/L (Figure 2), and was observed to increase gradually with flow (Table 4). Among the 5 different simulated flows, the 2 lowest flows were found to perform worse in pollutant removal, particularly so for PA. A comparison across the three pavements consistently showed PA lagging behind HP and PP, which were both on par in terms of pollutant removal. Despite the fluctuating inflow concentration, all three pavements were found to remove

up to 80 % of TSS after 15 years (Table 4). This indicates that these systems are not efficient in removing TSS at low flows. The results from this experiment have further refined the findings from the previous experiment (Yong *et al.* 2008), that middle flows perform better in TSS removal, rather than the lowest or the highest flows.

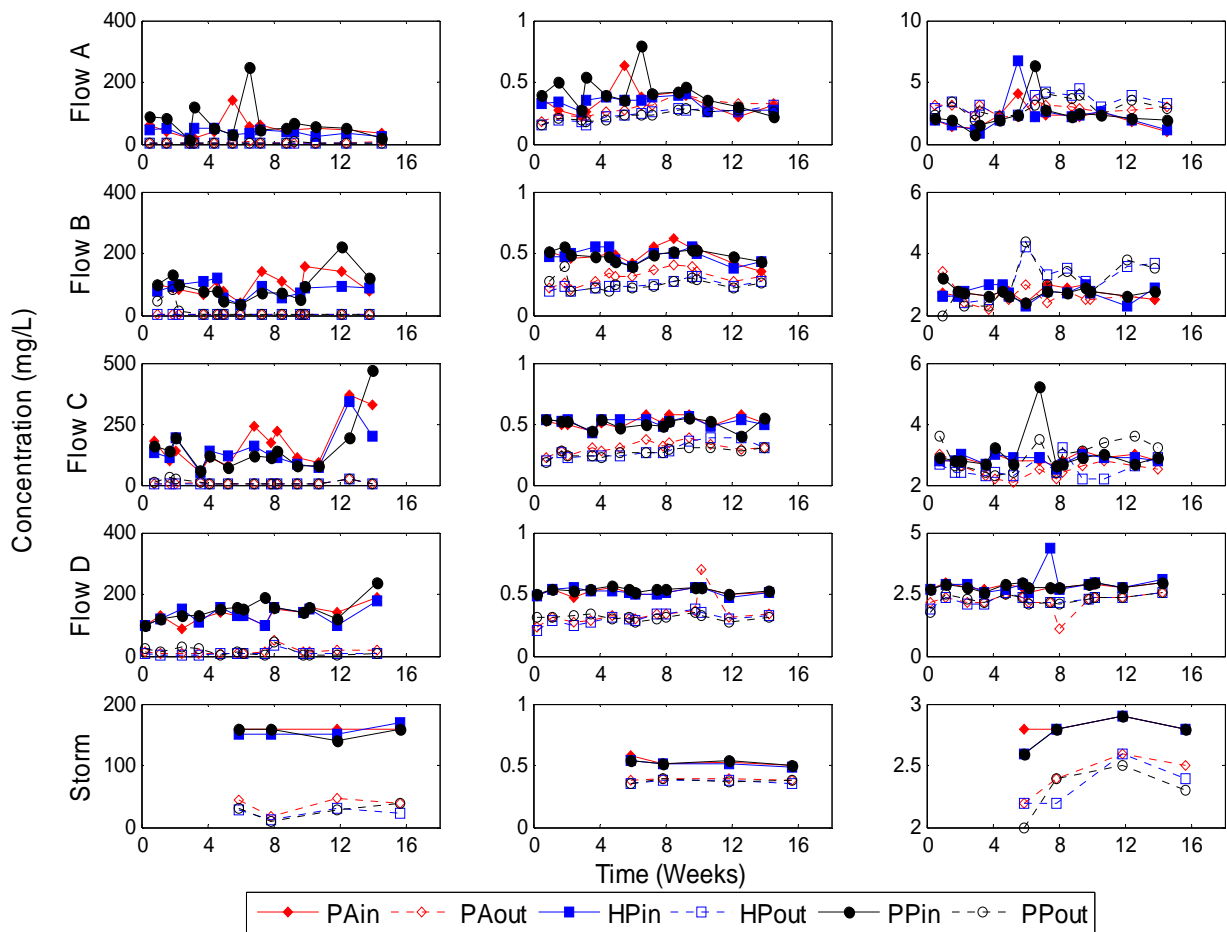


Figure 2. Graph Showing the Inflow and Outflow Concentrations of TSS, TP and TN, measured on a Daily and Composite Basis for PA, HP and PP across flows A, B, C, D and the storm events.

TP

The average TP inflow concentration ranged from 0.25 mg/L to 0.55 mg/L (Figure 2) and was observed to increase gradually with flow. Removal rates had an initial average of 55 % before dropping to 35 %, with PA performing worse than HP and PP, which were both on par in removal efficiency. Among the 5 flows, Flow C was found to be performing best. Leaching was observed only during low flow for all the pavements, particularly after the second storm simulation in the 8th year (Table 4). A possible explanation for the observed leaching could be caused by the breakdown of accumulated sediment over time within the system. A comparison of the average outflow concentration for each flow showed an interesting trend across all three pavements. Despite the variable inflow concentration, a gradual increase in the average outflow concentration was observed from low flow to high flow (Table 5). This suggests that higher flows and hence, higher volume of water may dislodge more particles accumulated over time. The opposite trend was observed with TN.

TN

The average TN inflow, which ranged from 1.5 mg/L to 3 mg/L, increased gradually with flow (Figure 2). A significant amount of leaching was observed with all flows except for Flow D and

the storm events, the removal rates of which started at 30 % before dropping to an average of 15 %. The same removal rates were observed during the storm simulations. Under all flow conditions, PA was consistently performing worse than the other two pavements. Unlike TP, across all three pavements, the average outflow concentration was observed to gradually decrease from low to high flow (Table 5). This suggests that low flows, and hence longer detention time facilitates the breakdown of trapped sediment in the clogged layer, thus increasing the outflow concentration of TN. Unlike the previous experiment (Yong *et al.*, 2008), where there was no leaching, a significant amount of leaching was observed here, particularly for Flows A, B and C, which were coincidentally lower than the median Brisbane flow used in the previous experiment, suggesting a possible influence of drying and high flow.

Table 5. Average inflow and outflow concentrations for TP and TN calculated across all three pavements for flow rates A, B, C, D and the storm events.

		TP in	TP out	TN in	TN out
PA	A	0.4	0.3	2.1	2.9
	B	0.5	0.3	2.7	2.7
	C	0.5	0.3	2.8	2.5
	D	0.5	0.3	2.8	2.2
	STORM	0.5	0.4	2.8	2.4
HP	A	0.3	0.2	2.2	3.3
	B	0.5	0.3	2.7	3.1
	C	0.5	0.3	2.8	2.5
	D	0.5	0.3	2.9	2.3
	STORM	0.5	0.4	2.8	2.3
PP	A	0.4	0.2	2.4	3.0
	B	0.5	0.3	2.7	3.0
	C	0.5	0.3	3.0	2.9
	D	0.5	0.3	2.8	2.3
	STORM	0.5	0.4	2.8	2.3

4 CONCLUSION

The results from this experiment has provided information on the effects of drought and rainfall events including storms, on the clogging behaviour and pollutant removal performance of these porous pavement types over 17 years. The early clogging observations and hence failure of PA and HP systems from the first phase of this laboratory investigation, which only simulated wetting, suggests that drying and wetting has a direct influence on the longer lifespan of these systems. Interesting observations and associations have also been made about nutrient detention time during high and low flows. Leaching of TP was found to increase gradually from low to high flows, while outflow TN concentration was found to decrease gradually from low to high flows.

These observations help inform the public on the average life expectancy of porous pavement systems under drying and various wetting conditions in Australia, as well as the treatment performance of these systems that are already in place. The knowledge gained will allow better predictions to be made of the performance of these systems over time. The decision to choose a particular system should not only be based on the climate data and environmental conditions of a potential site but also on the life expectancy and pollutant removal performance of the system, without

compromising one or another. These systems have yet to be tested and monitored in the field on a real time basis. Future modelling work based on data collected from this study could provide a better understanding of the clogging process, thus allowing more accurate predictions to be made on the performance of systems under normal drying conditions, as well as varying inflow rates, which would be experienced in reality. A better understanding of the clogging behaviour and treatment performance of Porous Asphalt, Hydrapave and Permapave was achieved.

LIST OF REFERENCES

- APHA-AQQA-WPCF (2005). Standard methods for the examination of water and wastewater. Washington D.C., American Public Health Association, American Water Works Association, Water Pollution Control Federation.
- Bean, E. Z., Hunt, W. F. and Bidelspach, D. A. (2007). "Field survey of permeable pavement surface infiltration rates." *Journal of Irrigation and Drainage Engineering* 133(3): 247-255.
- Brattebo, B. O., Booth, D. B. (2003). "Long-term stormwater quantity and quality performance of permeable pavement systems." *Water Research* 37 (18): 4369.
- Booth, D. B. and Leavitt, J. (1999). "Field evaluation of permeable pavement systems for improved stormwater management." *Journal of the American Planning Association* 65(3): 314-325.
- Boral Clay and Concrete (2005). Hydrapave Technical Brochure.
- Dierkes, C., Kuhlmann, L., Kandasamy, J., Angelis, G. (2002). "Pollution Retention Capability and Maintenance of Permeable Pavements". Proc. 9th Int. Conf. on Urban Drainage, Global Solutions for Urban Drainage. Portland, Oregon, USA.
- Diniz, E. V. (1980). Porous pavement, Phase I, Design and Operational Criteria, EPA-600/2-80-135. Cincinnati:U.S. Environmental Protection Agency, Municipal Environmental Research Laboratory.
- Duncan, H. P. (1999). Urban stormwater quality: a statistical overview. Melbourne, Australia, Cooperative Research Centre for Catchment Hydrology: 80.
- Dymon Industries. (2007). "Permapave." from www.permapave.com.au.
- Ferguson, B. K. (2005). *Porous Pavements*. Boca Raton, Florida, CRC Press LLC.
- Galli, J. (1992). Preliminary Analysis of the Performance and Longevity of Urban BMPs Installed In Prince George's County, Maryland. Prepared for the Department of Natural Resources. Prince George's County, MD.
- Gburek, W. and J. Urban. (1980). Storm Water Detention and Groundwater Recharge Using Porous Asphalt - Experimental Site. For: USDA-SEA-AR Northeast Watershed Research Center, University Park, PA. International Symposium on Urban Storm Runoff. University of Kentucky.
- Goforth, G., Diniz E., and Rauhut, J. Stormwater Hydrological Characteristics of Porous and Conventional Paving Systems. Prepared for: US EPA Office of Research and Development. Cincinnati, OH.
- Hatt, B. E., Fletcher, T. D. and Deletic, A. (2007b). "Treatment Performance of Gravel Filter Media: Implications for Design and Application of Stormwater Infiltration Systems." *Water Research* 41(12): 2513-2524.
- Pratt, C. J., Newman, A. P. and Bond, P. C. (1999). "Mineral oil bio-degradation within a permeable pavement: Long term observations." *Water Science and Technology* 39(2): 103-109.
- Scholz, M. and Grabowiecki, P. (2007). "Review of permeable pavement systems." *Building and Environment* 42(11): 3830-3836.
- Siriwardene, N., Deletic, A. and Fletcher, T. D. (2007). "Clogging of stormwater gravel infiltration systems and filters: Insights from a laboratory study." *Water Research* 41(7): 1433-1440.
- Yong, C.F., Deletic, A., Fletcher, T.D. and Grace, M.D. (2008). "The Clogging Behaviour and Treatment Efficiency of a Range of Porous Pavements". Proc. 11th Int. Conf. on Urban Drainage, Edinburgh, Scotland, UK.