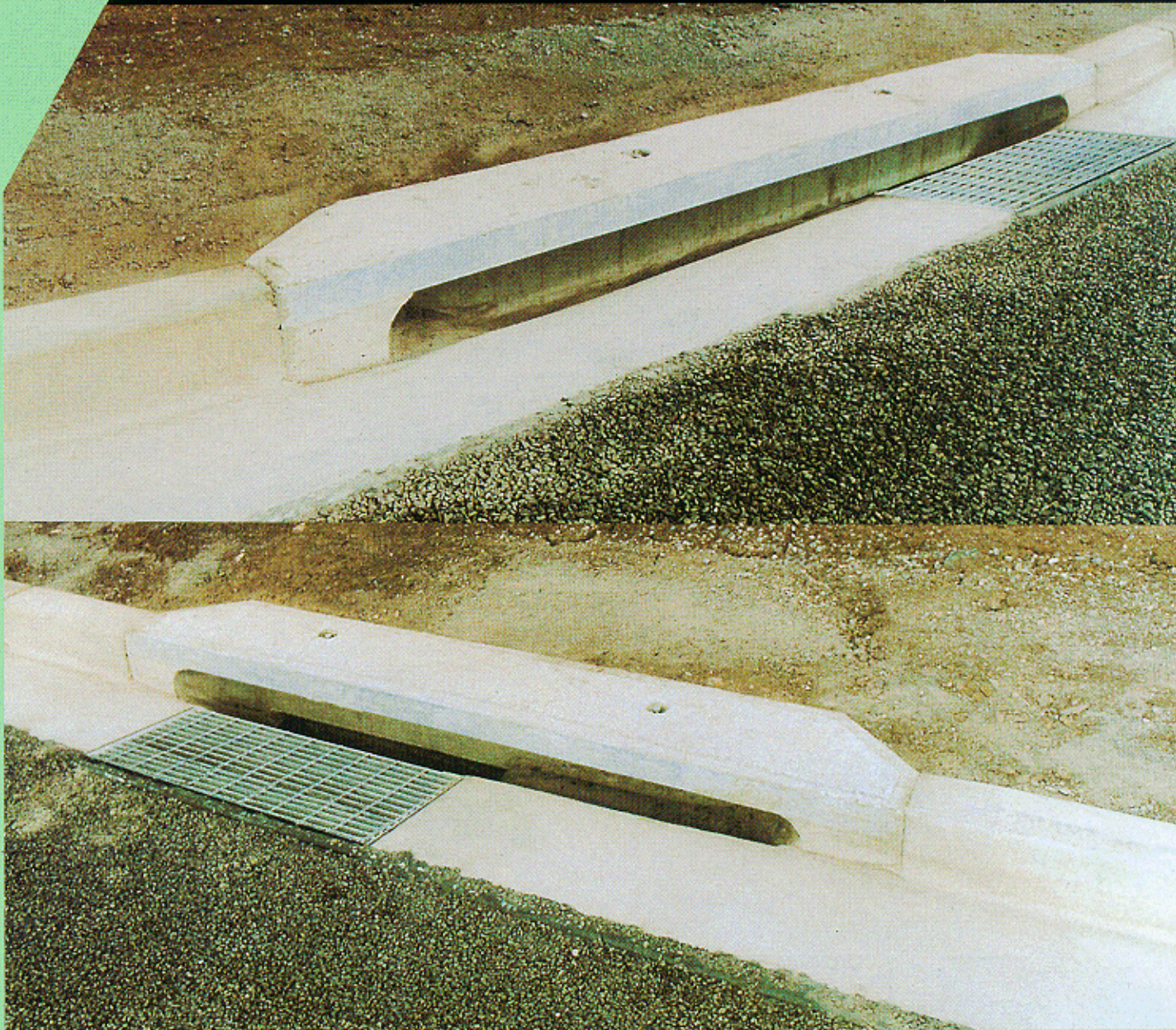




EKI LINTELS



Rocla extended kerb inlet (EKI) lintels are the engineered precast concrete solution to side entry pit top construction.

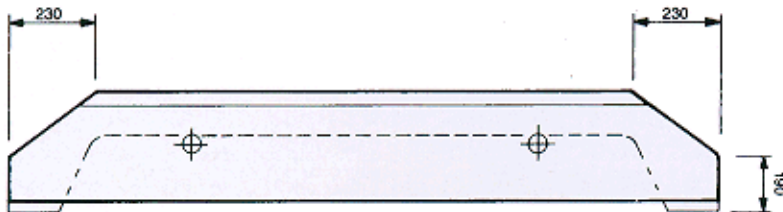
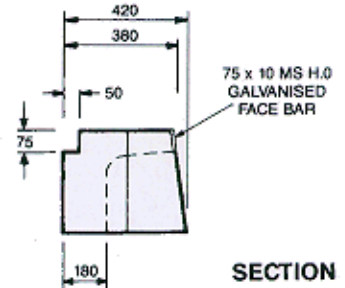
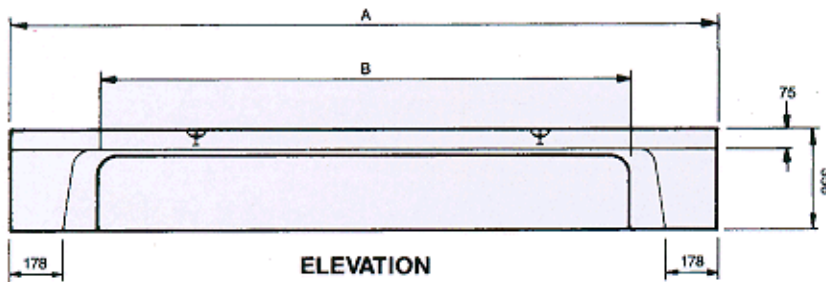
Manufactured from high quality precast concrete they provide a clear span entry for effective hydraulic performance in controlling stormwater runoff directly into the drainage system.

Rocla EKI lintels are suitable for all modern kerb and gutter profiles. They are an attractive, robust and proven product with sufficient strength to bear the design traffic loads.

Units are produced in a range of standard lengths, with some available as either concave or convex units for use in curved roadworks, such as cul-de-sacs.

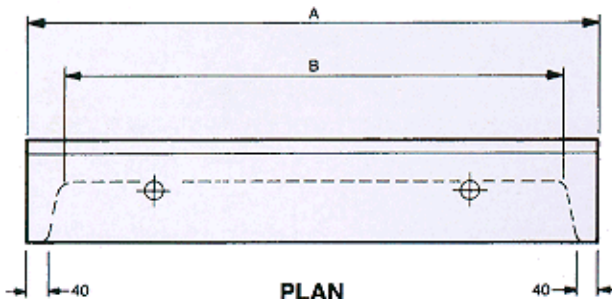
DIMENSIONS AND MASSES

Nominal Opening Size	.9m	1.2m	1.8m	2.4m	3.0m	3.6m	4.2m	4.8m
A (mm)	1000	1830	2440	3050	3660	4230	4860	5470
B (mm)	885	1470	2010	2660	3270	3810	4440	5050
Approx Weight (t)	.27	.34	.46	.58	.70	.80	.90	1.03

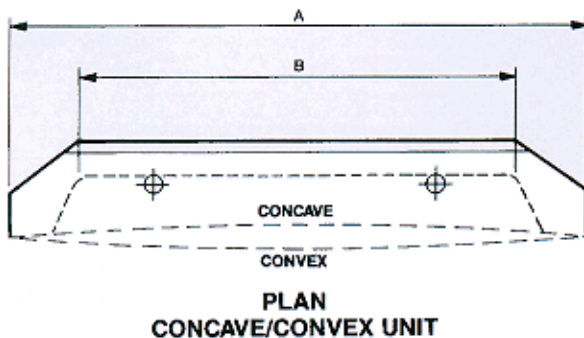


When ordering lintels the nominal opening size is used to identify each unit.

A specification for the manufacture and testing of lintels is available from your local Rocla Sales Office.



For further information on our range of Pipeline products contact your local sales office on our **national number 131 004**. Mobile phones in country areas may need to ring the office numbers.



- Sydney** Old Bathurst Road, Emu Plains 2750
Phone (047) 35 5100 Fax (047) 35 2608
- Dapto** Hamilton Street, Dapto 2530
Phone (042) 61 1044 Fax (042) 62 1589
- Dubbo** Jannali Road, West Dubbo 2830
Phone (068) 82 2166 Fax (068) 82 6243
- Newcastle** Neilson Street, Edgeworth 2285
Phone (049) 58 1633 Fax (049) 58 4207

The contents of this brochure are copyright and may not be reproduced in any form without the prior written consent of Amatek Limited.

Recommendations and advice regarding the use of the products described in this brochure are to be taken as a guide only, and are given without liability on the part of the company or its employees.

Amatek Limited, ACN 000 032 191.
Trading as Rocla Pipeline Products.
™ are trademarks belonging to Amatek Limited.
© Amatek Limited, February 1997.



- Note:** Concave/convex unit.
- (i) 8.3m radius only.
 - (ii) 1.8m and 2.4m nominal opening only.

⊕ = 1.3t LIFTING ANCHORS